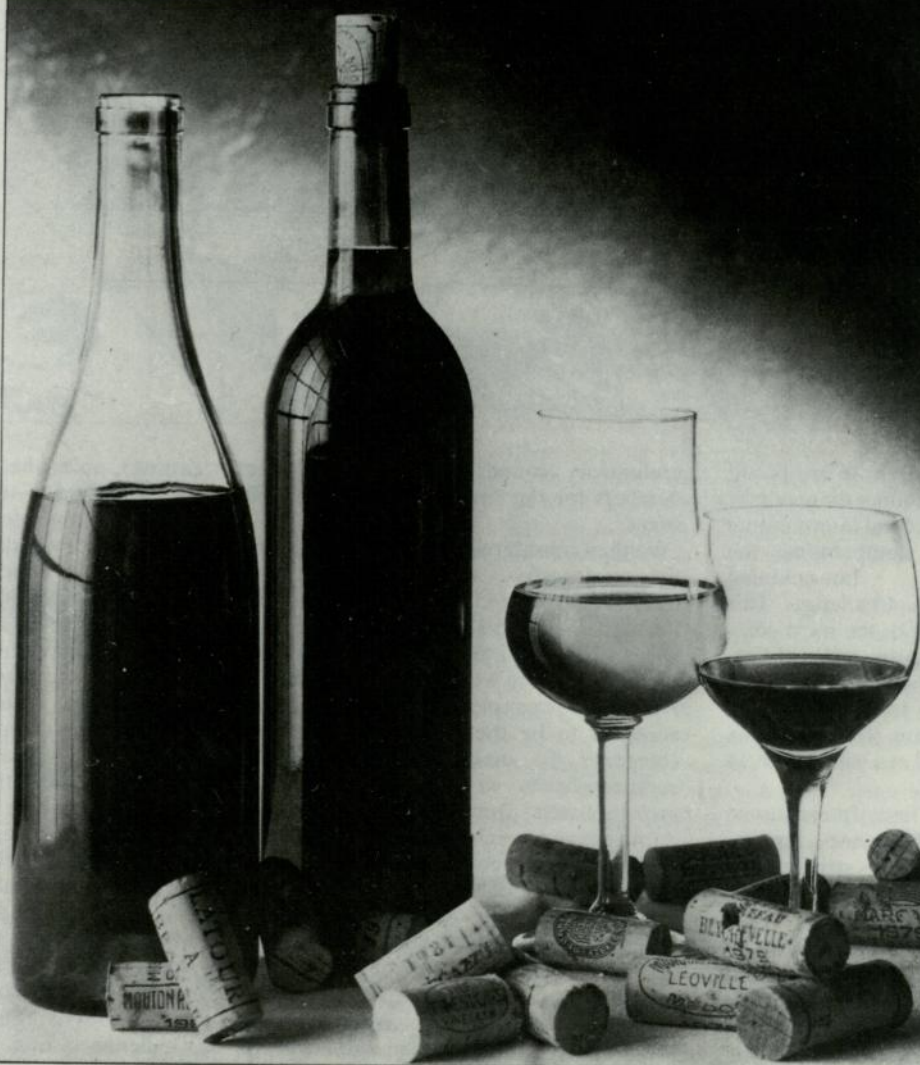


INCORPORATING WHAT WINE?

WINE

OUR CHAMPIONS WORLD BEATING RED WINES



FRANCE 1985 • HISTORIC VINTAGE?

COMPREHENSIVE REFERENCE SECTION

THE JUDGES

Burton Anderson

Italian expert and author of the classic book on Italian wine 'Vino' as well as the Mitchell Beazley Pocket Book of Italian Wines.

Maureen Ashley MW

Of the Wine Standards Board, the trade's disciplinary body. Enthusiast for Italian wines.

Stefan Auriol

French born Wine Merchant, based in Hampshire.

**John Avery MW**

Of Avery's of Bristol, pioneer importers of Australian and American wine.

John Axon MW

Of Baxter Hoare Ltd, London wine merchants.

Ian Bamford MW

Director of Bamford Wines in Lancashire — specialist merchant.

David Bedford MW

Buying Director of Victoria Wine, the largest chain of off-licences in Britain.

**Nick Belfrage MW**

American - born owner of The Market and Le Provençal shops in London, and wine consultant and specialist in Italian wine. Author of the recent 'Life beyond Lambrusco' on Italy's fine wines.

Peter Bennett

Of traditional wine merchants Berry Bros in London's St. James's.

John Bertaut

Of Sookias and Bertaut, specialists in wines from south-west France and exclusive importers of many French wines.

Robert Walker

Recently of Cullens, now of the Master Cellar Wine Warehouse in Croydon, owned by the Davisons chain and the source of much interesting wine.

Julian Brind MW

Wine buyer for Waitrose and responsible for one of the most interesting supermarket selections available.

Simon Brookes

Of Hein Wines in Hampton, Middlesex, specialist in French wines.

Oz Clarke

Editor of Webster's Wine Price Guide, Wine writer for the Sunday Express and winner of this year's Wine Guild of Great Britain Wine Writer Award.

Robin Crameri MW

Wine buyer for brewers Greene King in Suffolk.

Nick Davies

Owner of the dynamic specialist merchants Hungerford Wine Co based in Berkshire. Specialises in French wines.

Roger Elvins

Of Cordier Wines and a specialist taster of Bordeaux red and white wines.

**Charles Eve MW**

Wine Buyer for the chain of Peter Dominic shops (480 branches nationwide) Well respected lecturer at the Château Loudenne Ecole du Vin.

Martin Everett MW

Managing Director of Wine Merchants, Mayor Sworder & Co in London.

Simon Farr

Buying Director for the enterprising Bibendum wine emporium in London.

Christopher Fielden

Co-author with John Arlott of 'Wines of Burgundy' and specialist in Spanish wines.

Jonathan Firth MW

Director of Courtenay Wines International in St Albans.

**Margo Todorov**

Director of Bulgarian Vintners, the main importers of Bulgarian wines into the UK.

Tom Gilbey

Runs Brinkley's Wines in London, setting for the Challenge and all other WINE tastings.

Claude Giret

Chairman of Berkmann Wine Cellars/Le Nez Rouge in London, the major importers of Dubouef Beaujolais wines.

Philip Goodband MW

Chairman of the Masters of Wine Council and Buying Director of Stowells of Chelsea.

Mark Harrison

Director and Buyer at Bishopsmead Wine Co in Dorking.

Richard Harvey MW

Of Richard Harvey Wines in Wimborne Minster, Dorset, responsible for an interesting and growing range of wines.

Jo Hawkins

Specialist in French wines and importer of Beaujolais from Sarrau.

**Tony Hein**

Of Hein Wines in Hampton, Middlesex. Specialist Burgundy importer.

Andy Henderson

Importer of Torres' South American wines and Australian wines from De Bortoli. Formerly LBC wine correspondent.

Richard Hobson MW

Of Italian Wine Agencies and enthusiast for Italian fine wines.

James John MW

Of Harveys of Bristol, traditional wine merchants.

Robert Joseph

Editor of WINE, Glenfiddich Wine Writer of the Year and author of 'The Wine Lists'.

David Kalber

Of Ehrmanns in London. Specialist in wines from the Iberian Peninsula.

Barry Kettle

Of Spanish specialists Arriba Kettle in Birmingham.



John Livingstone-Learmonth
Rhône specialist and co-author with Melvyn Master of the Faber book on the subject.



Pamela Vandyke Price
Wine writer and contributor to many wine publications.

Don Lovell MW

Of International Distillers and Vintners and Chairman of the Wine Development board.

**Luciana Lynch**

Tuscan born Commercial Director of Findlater Matta agencies.

Mark Lynton MW

Of Damis Agencies.

**Lorne Mackillop MW**

Wine consultant to various wine companies and restaurants.

Kathryn McWhirter

Editor of Which? Wine Guide and the Good Wine Bar Guide.

Charles Metcalfe

Associate Editor of WINE and opera singer.

Manuel Moreno

Of Moreno Wines, Spanish specialists with a particularly wide range of wines from all areas of Spain.

**Jasper Morris MW**

Of Morris & Verdin, specialists in French wines from the Rhône, Loire and particularly Burgundy.

Angela Muir MW

Wine Buyer at Grant's of St James, director of Hatch Mansfield Ltd and author of Grant's of St. James's 1986 Wine Diaries.

Derek Smedley MW

Technical Director of Whitbread Wine & Spirits Division in London.

David Stevens MW

Chairman of Stevens Garnier and Wine Consultant. Specialist in wines from Portugal.

Tom Stevenson

Co-editor of the Sunday Telegraph Good Wine Guide, wine writer and contributor to a number of publications.

Fiona Wild

Editorial assistant and tasting co-ordinator.

Remington Norman MW

Of La Réserve in London who concentrate their attention on fine and rare older wines.

Richard Nurick

Of Hawkins and Nurick, fine wine merchants specialising in French domaine-bottled wines.

**Sebastian Payne MW**

Wine Buyer for the Wine Society, specialist Bordeaux taster.

Dennis Ramsbottom MW

Of wholesale wine merchant and sherry importer, Dent & Reuss in Hereford.

**Geoffrey Roberts**

Of the eponymous specialists in importing American and Australian fine wine.

James Rogers

Wine Consultant and renowned blind taster.

David Rutherford

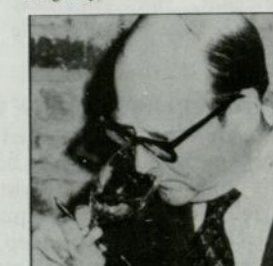
Director of Rutherford Osborne & Perkin and importer of Martini.

Pierre Sarrau

Producer of Beaujolais wines.

**Mark Savage MW**

Of Windrush Wines in Cirencester, exclusive importers of wines from various regions of the USA and Burgundy.

**Bill Warre MW**

Director of John E Fells in London and member of the historic port family.

